

d=88

# COLEGIACA

colombic

Juifane

INTRODUCTION

Percussions

Musical notation for the introduction and first part of the piece. It consists of five staves. The first staff is a treble clef with a 4/4 time signature and a key signature of one sharp (F#). The second and third staves are also in treble clef. The fourth and fifth staves are in bass clef. The notation includes quarter notes, eighth notes, and rests. There are some handwritten markings like '+' and 'x3'.

(B)

Musical notation for the second part of the piece, marked with a circled B. It consists of two staves. The first staff is in treble clef and the second is in bass clef. The notation includes chords and rhythmic patterns. There are handwritten markings like 'Dm', 'C', 'x3', and 'Dm'.

Musical notation for the third part of the piece. It consists of two staves. The first staff is in treble clef and the second is in bass clef. The notation includes chords and rhythmic patterns. There are handwritten markings like 'Dm', 'C', 'x3', and 'Dm'.

Dal  
of  
F#  
al  
F#

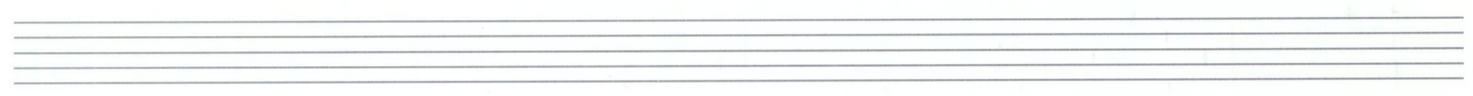
Musical notation for the fourth part of the piece, marked 'REFRAIN'. It consists of two staves. The first staff is in treble clef and the second is in bass clef. The notation includes chords and rhythmic patterns. There are handwritten markings like '22', 'REFRAIN', and 'Dm'.

Musical notation for the fifth part of the piece. It consists of two staves. The first staff is in treble clef and the second is in bass clef. The notation includes chords and rhythmic patterns. There are handwritten markings like '10', '120', and 'Dm'.

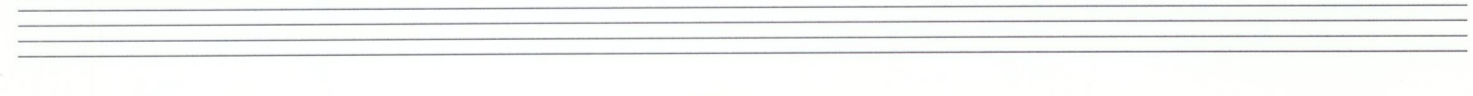
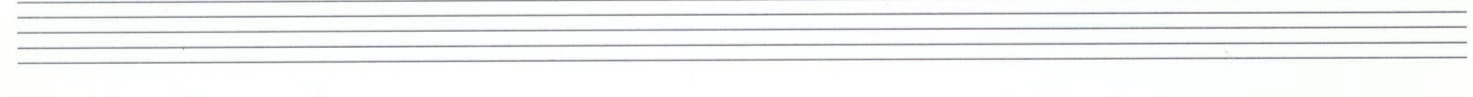
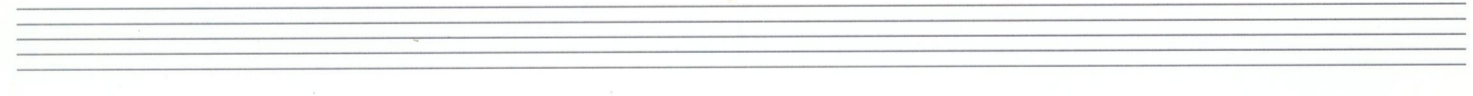
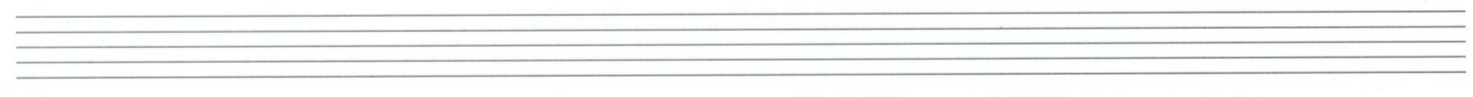
Handwritten musical notation for guitar, first system. It consists of two staves. The top staff has a treble clef and contains four measures of music with chords marked 'C', 'Dm', 'C', and 'Dm'. The bottom staff has a bass clef and contains four measures of music with notes and rests.

Handwritten musical notation for guitar, second system. It consists of two staves. The top staff has a treble clef and contains two measures: the first has a 'Dm' chord, and the second contains the text 'Da Capo al ~~♯~~' with a circled sharp sign. The bottom staff has a bass clef and contains two measures of music.

Handwritten musical notation for guitar, third system. It consists of a single staff with a treble clef. It starts with a key signature change to one sharp (F#) and contains a few notes. A large bracketed section follows with the text 'REFRAIN AD LIB' and a circled '60'. To the right, another bracketed section contains the text 'FIN AU SIGNET DU CHIST'.



COLEGIATA Cantare



2