

ADIOS MUCHACHOS

SANDERS

Tempo de Tango

Handwritten musical notation for Accordion. The score is in 4/8 time and includes a treble clef with a key signature of one sharp (F#) and a bass clef. The tempo is marked "Tempo de Tango". The first measure is marked "ROBATO" with a hairpin indicating a deceleration. The second measure is marked "sf". The piece concludes with a double bar line and repeat slashes.

A Tempo

Handwritten musical notation for Accordion. The score is in 4/8 time and includes a treble clef with a key signature of one sharp (F#) and a bass clef. The tempo is marked "A Tempo". The piece concludes with a double bar line and repeat slashes.

Handwritten musical notation for Piano. The score is in 4/8 time and includes a treble clef with a key signature of one sharp (F#) and a bass clef. The tempo is marked "A Tempo". The piece concludes with a double bar line and repeat slashes.

Handwritten musical notation for Marimba and Cbasse. The score is in 4/8 time and includes a treble clef with a key signature of one sharp (F#) and a bass clef. The tempo is marked "A Tempo". The Marimba part is marked "sf". The Cbasse part is marked "SIMILE". The piece concludes with a double bar line and repeat slashes.



Hec

Handwritten musical notation for Horns (Hec), consisting of two staves (treble and bass clef) with notes and rests.

Po

Handwritten musical notation for Piano (Po), consisting of two staves (treble and bass clef) with notes and rests.

Clar

Handwritten musical notation for Clarinet (Clar), consisting of a single staff with notes and rests.

ctb

Handwritten musical notation for Contrabass (ctb), consisting of a single staff with notes and rests. The word "simile" is written above the staff.

acc.

Handwritten musical notation for Accordion (acc.), consisting of two staves (treble and bass clef) with notes and rests. A double bar line is present at the beginning of the system.

Po

Handwritten musical notation for Piano (Po), consisting of two staves (treble and bass clef) with notes and rests.

Clar

Handwritten musical notation for Clarinet (Clar), consisting of a single staff with notes and rests.

ctb

Handwritten musical notation for Contrabass (ctb), consisting of a single staff with notes and rests. The word "simile" is written above the staff.



13

acc.

Po

Har.

ctb

acc.

p sub

simile

Po

p

Har

ctb



21

acc.

psub sinife

Po

8va acta DP

Har

tb

ts

acc

sinife

Po

Lolo

Har

trm. NF

tb



24

Handwritten musical score for the first system, consisting of four staves. The notation includes various notes, rests, and dynamic markings. The word "simile" is written above the first staff, and "B.S." is written above the second staff. The word "lun." is written above the third staff. The system concludes with a double bar line and a fermata.

Rubato

Handwritten musical score for the second system, consisting of two staves. The notation features chords and melodic lines. The system concludes with a double bar line and a fermata.

a Tempo

Handwritten musical score for the third system, consisting of two staves. The notation includes chords and melodic lines. The system concludes with a double bar line and a fermata. The dynamic marking "mf" is visible below the second staff.



(B)

acc.

Po

Clar.

acc.

5

Po

Clar.



9

acc.

F *p* *simile*

Po

Mar

db

13

acc.

mf

rit.

Po

Mar

trém.

db

14

Acc.

Po

clb.

simple

21

Acc.

Po

clb.

simple

F



25

acc. *DF* *Andro*

P. *DF* *F*

Par. *DF*

ctb.

⊕ Jamer en octaves l'autre la partie => 33

29

Acc.

P.

Par.

ctb.



33 *PIUOSTO*

Par.

Par.

db.

A Tempo

Acc.

P.

db.

simile



Handwritten musical score for a 4-staff system, consisting of 12 staves. The notation includes various instruments and dynamics.

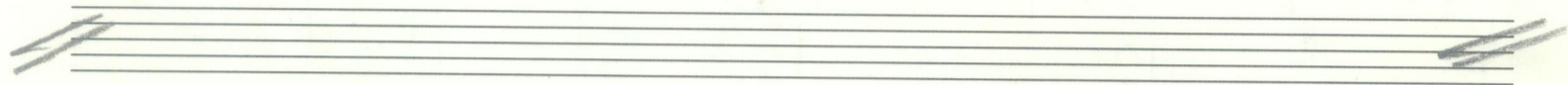
- Staff 1 (5):** Acc. (Accordions) with *no pffo* marking.
- Staff 2 (Po):** Piano.
- Staff 3 (Db):** Double Bass.
- Staff 4 (9):** Acc. (Accordions) with *DF* marking.
- Staff 5 (Po):** Piano.
- Staff 6 (Db):** Double Bass.
- Staff 7 (13):** Acc. (Accordions).
- Staff 8 (Po):** Piano with *staccato* marking.
- Staff 9 (Db):** Double Bass.



11 sempre *l*, staccato e leggero

Po

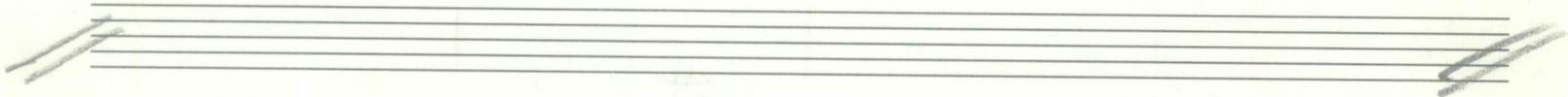
cb



21

Po

cb



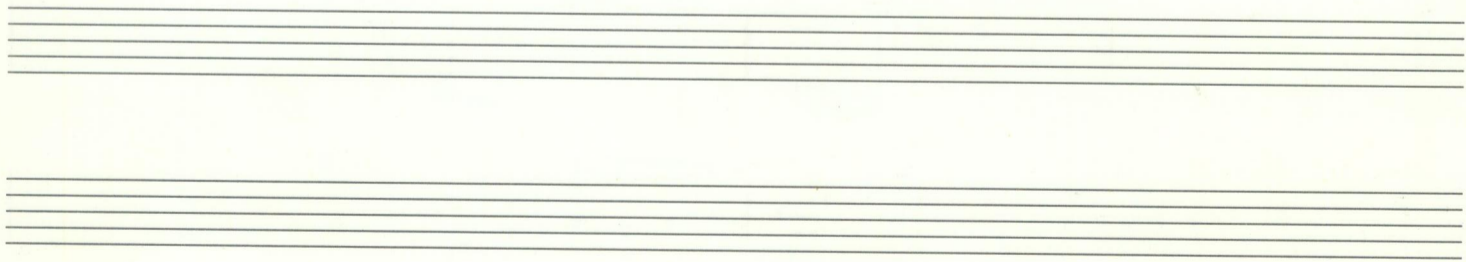
25

Acc.


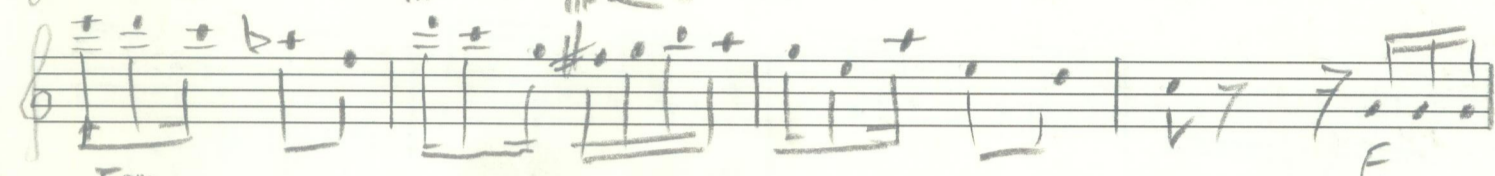
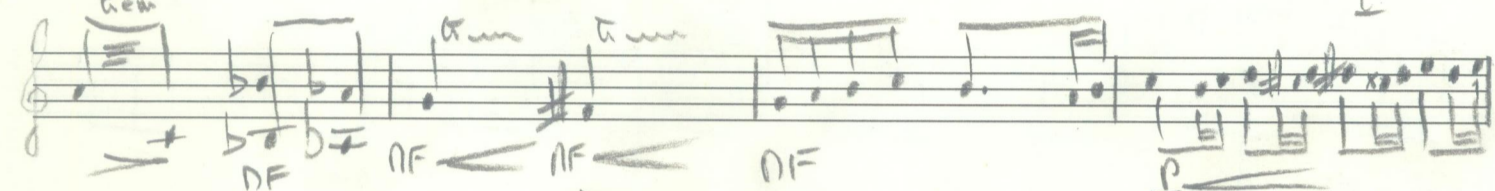
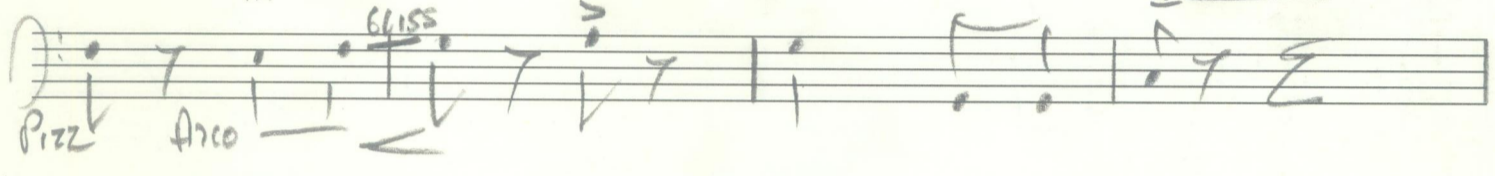
Po

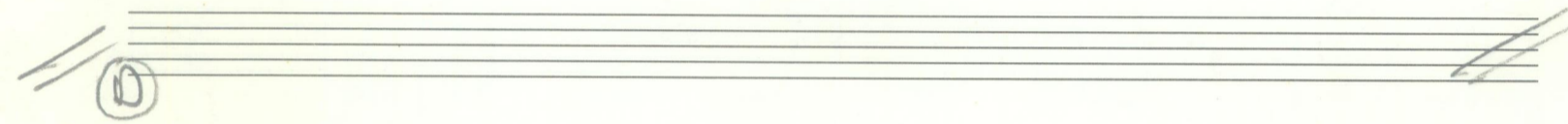
Har.



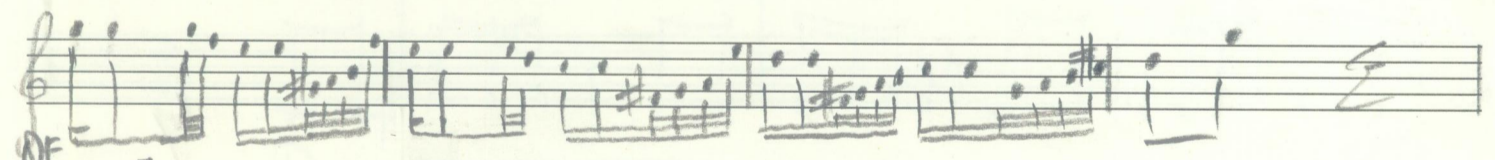

cb



29 Poco Mit. ♩ Tempo

Acc. 
P. 
Var. 
dtb 
Pizz Arco



Acc. 
P. 
Var. 
dtb 
P sub



13

3

Acc. *m. droite* *molto*

Po *p sempre* (P)

Clar. *arco*

cb *Pizz.*

9

Acc.

Po

Clar.

cb

13 Rubato

ctb.

Arco

A Tempo

Po

Sva

Loco

Clar

Hb.

15

arrangement
1.96