

♩ en octaves

Handwritten musical score for the first system. It consists of three staves: a treble clef staff with a melodic line, a bass clef staff with a bass line, and a drum staff with a rhythmic pattern of 'x' marks. The music is in 4/4 time and includes various notes, rests, and articulation marks.

Instrumentation libre + Fill.

Handwritten musical score for the second system. It includes a treble clef staff, a guitar staff with 'x' marks and 'Fill' annotations, and a bass clef staff. The guitar staff shows a sequence of notes and rests, with 'Fill' indicating a fill-in section.

Handwritten musical score for the third system. It includes a treble clef staff, a guitar staff with 'x' marks and 'Fill' annotations, and a bass clef staff. The guitar staff shows a sequence of notes and rests, with 'Fill' indicating a fill-in section.

Handwritten musical score for the fourth system. It includes a treble clef staff, a guitar staff with 'x' marks and 'Fill' annotations, and a bass clef staff. The guitar staff shows a sequence of notes and rests, with 'Fill' indicating a fill-in section.

Handwritten musical score for the fifth system. It includes a treble clef staff, a guitar staff with 'x' marks and 'Fill' annotations, and a bass clef staff. The guitar staff shows a sequence of notes and rests, with 'Fill' indicating a fill-in section.

af
♩

Chord progression 1:

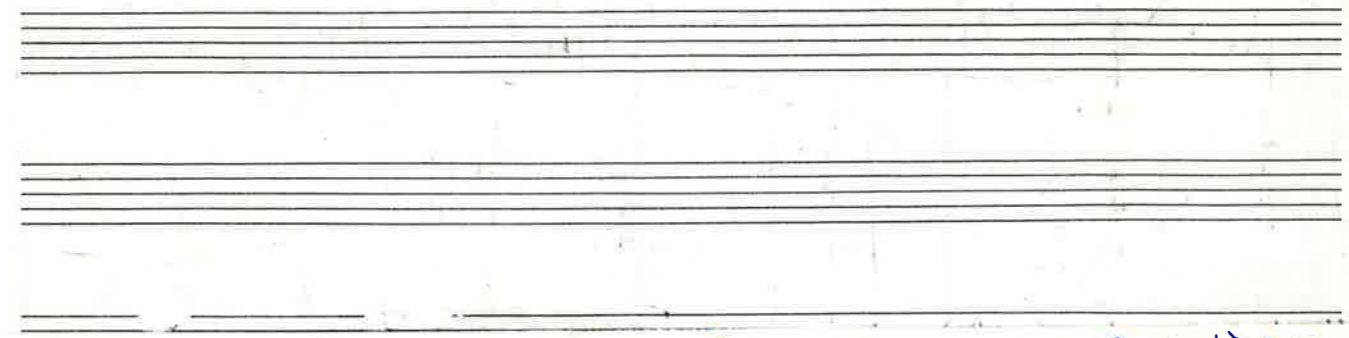
^{ba} C7	F7	Fb7n	G-7	C7
---------------------	----	------	-----	----

Chord progression 2:

^{ba} C7	Fb7n	Fb7n	Bb-7	C7
---------------------	------	------	------	----

Chord progression 3:

^{ba} C7	F7	Fb7n	G-7	C7
---------------------	----	------	-----	----



TOUJOURS EN + EN + FREE, RESTER SUR ET POUR "CHAOS"
L'ENTRÉE ALORS ON JUSQU'À L'ARRIVÉE DU SAUVOIR
PUIS REPRENDRE LA ROUTE

Basse

INTERLUDE
CHAOS

Ad. P.S.

Piano

Piano

Basse

Batt.

P.

B.

Batt.

Charley

Piano

Handwritten musical notation for Piano, Bass, and Drums. The Piano part features a melodic line with various accidentals. The Bass part has a rhythmic accompaniment with triplets. The Drums part shows a simple pattern with 'x' marks.

Handwritten musical notation for Percussion instruments: Ch (Chimes), TM (Tom), G.C (Gong/Cymbal), and C. Clair (Clarinete). The notation includes rhythmic patterns and 'x' marks indicating specific sounds or techniques.

P

B

Batt

Handwritten musical notation for Piano (P), Bass (B), and Batterie (Batt). The Piano part has a complex melodic line with many accidentals. The Bass part has a rhythmic accompaniment. The Batterie part shows a drum pattern with 'x' marks and a dynamic marking of 'fp' (fortissimo).

fp

Handwritten notes at the bottom right: *dat* and *at*.

TAMBO

A6

Piano

Basse

Batterie (mise en face)

Walking Tempo

F7 sus4

THEME

Piano basse

Batterie

CHORUS

F7 Bb7 G7

F- Bb^{b5}-7 G^{b5}-7

F7 Bb7 G7