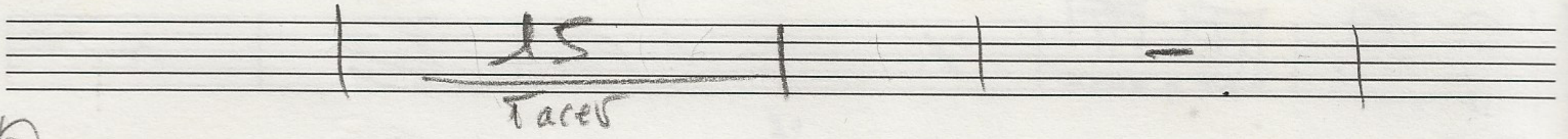
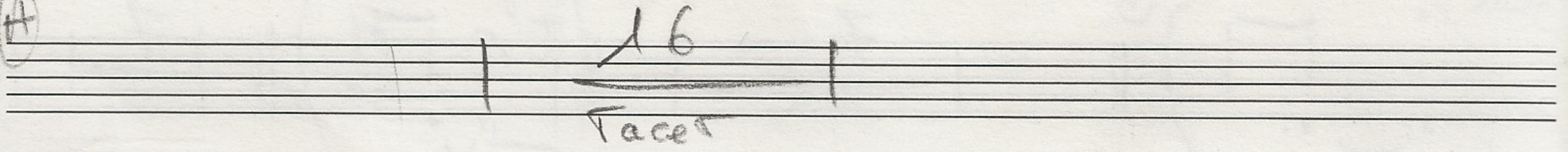


Handwritten musical score for Flute and Triangle. The score is written on ten staves. The top staff is labeled "flute" and contains melodic lines with a key signature change to D major (one sharp) and a circled "H". The second staff is labeled "flute" and contains rhythmic patterns with "x" marks. The third staff has a circled "B" and a "FINE" marking. The fourth and fifth staves contain rhythmic patterns. The sixth staff has a circled "15" and a key signature change to D major. The seventh staff is marked with a circled "4" and contains rhythmic patterns. The eighth and ninth staves contain rhythmic patterns. The tenth staff is labeled "TRIANGLE" and contains rhythmic patterns. The score concludes with "al fine" and a key signature change to D major.

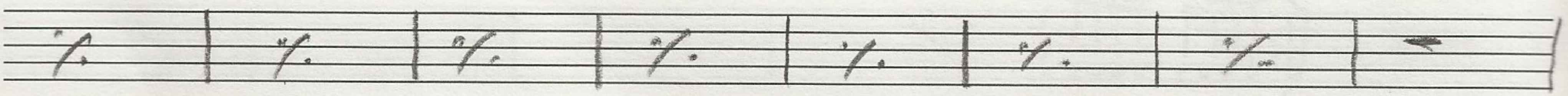
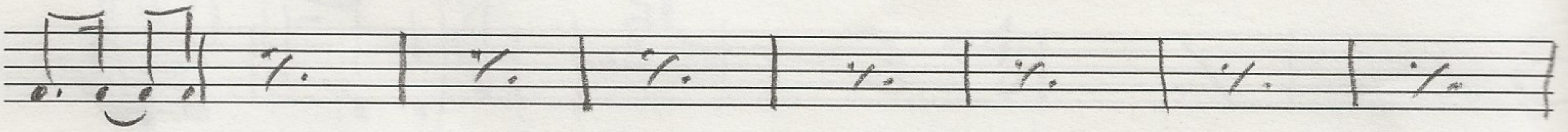
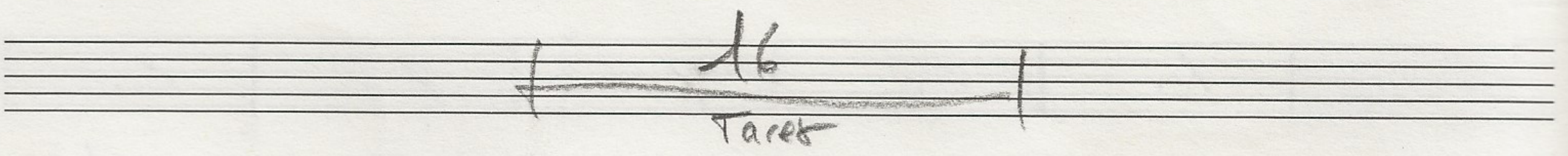
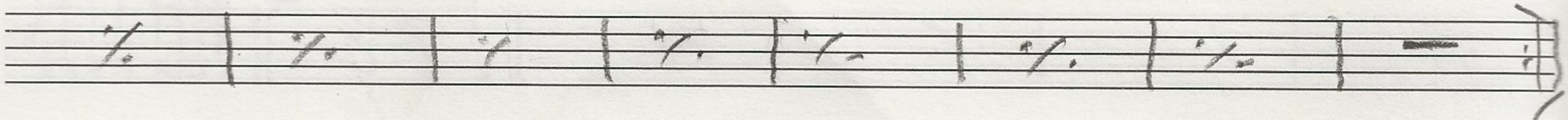
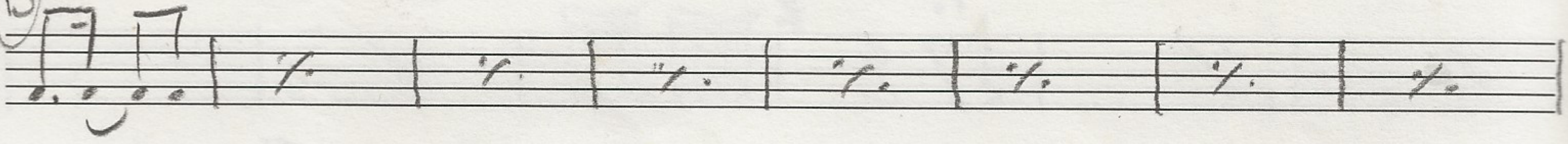
CHORO : André de Sa (1888)  
 Av. Cosme



A



B



Tacet of June

Choro : Anchi de Sapato novo Av comec

Tom Basso