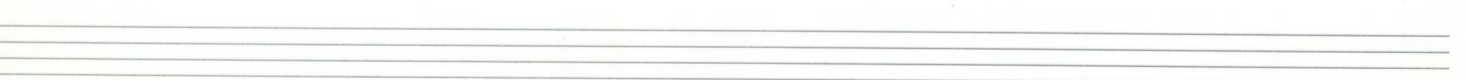
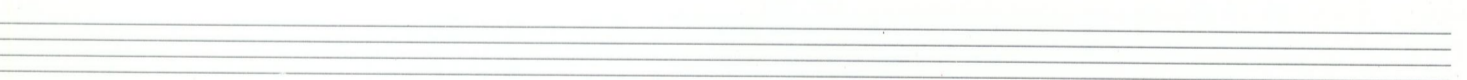
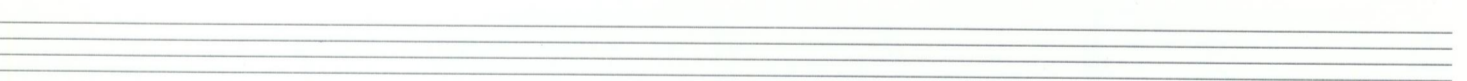
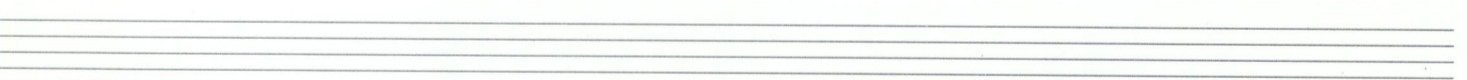
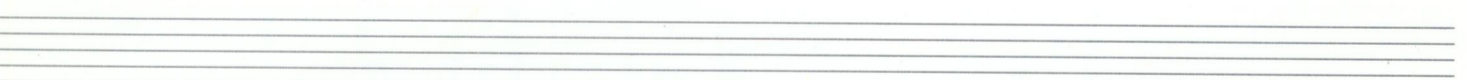
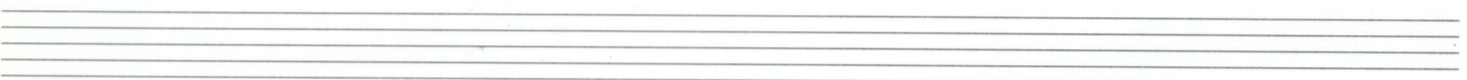
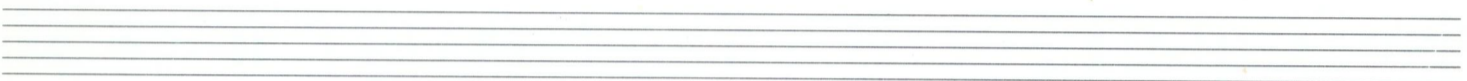
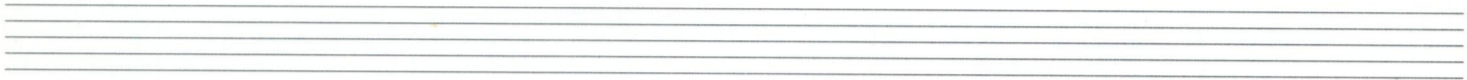
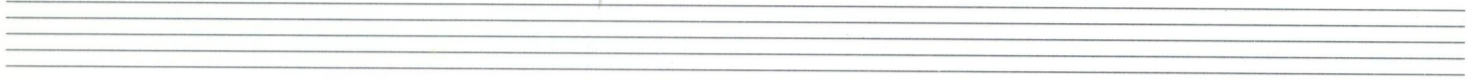


EASY LIVING

ALTO



ESTY LIVINO

♩=63

1) INTRO

Handwritten musical notation for the first system, including a treble clef, key signature of one sharp (F#), and a 3/4 time signature. The notation features a series of notes with various accidentals and dynamics such as *p* and *mf*. There are also some handwritten annotations above the notes, possibly indicating fingerings or articulation.

THIRD 2)

Handwritten musical notation for the second system, continuing the piece with similar notation and dynamics like *p*.

Handwritten musical notation for the third system, featuring a treble clef and a 3/4 time signature. It includes dynamics like *PF* and *p*.

Handwritten musical notation for the fourth system, with various dynamics including *PF*, *p*, and *F*.

Handwritten musical notation for the fifth system, featuring a treble clef and a 3/4 time signature. It includes dynamics like *pp* and *mf*.

Handwritten musical notation for the sixth system, which is mostly blank with the text "HABA HA CHORUS" and "TENOR" written across the staff.

Handwritten musical notation for the seventh system, including a treble clef and a 3/4 time signature. It features dynamics like *p*.



Handwritten musical score for guitar, consisting of 12 staves. The notation includes various chords, triplets, and dynamic markings.

Staff 1: Chords: $\begin{matrix} + \\ b \\ \pm \end{matrix}$, $\begin{matrix} b \\ \pm \\ b \end{matrix}$, $\begin{matrix} b \\ \pm \\ + \\ b \end{matrix}$. Dynamic: *mf*.

Staff 2: Dynamic: *p*.

Staff 3: Dynamic: *pp*.

Staff 4: Dynamic: *mf*.

Staff 5: Dynamic: *f*.

Staff 6: Chords: $\begin{matrix} 3 \\ \pm \end{matrix}$, $\begin{matrix} 3 \\ \pm \end{matrix}$, $\begin{matrix} 3 \\ \pm \end{matrix}$.

Staff 7: Section marker: **10**. Text: CHORUS GUITARE. Dynamic: *p*.

Staff 8: Chord: $\begin{matrix} 7 \\ \pm \end{matrix}$.

Staff 9: Chord: $\begin{matrix} 10 \\ \pm \end{matrix}$.

Staff 10: Chords: $\begin{matrix} 15 \\ + \\ b \end{matrix}$, $\begin{matrix} b \\ b \\ b \end{matrix}$.

Staff 11: Section marker: **11**. Text: **FIN** CHORUS GUITARE.



CADENCE GUITAR [12] [13] # Tp, Cb 1.1

[14] TRPOI

[15] *mf*

[16] *p*

